

## SWATCH CARD 01.1

Please avoid using any previous swatch cards as colours are updated. This card represents the standard items we stock. Ask us about the vast range of textiles we can order for you — or use your own suitable fabric with the Customer's Own Material (COM) option. These swatches are for reference only and colours may vary by browser, monitor, or printer. Please refer to a physical sample for true colour and texture detail, and **use codes where applicable, when ordering.**

# Textiles

## Contract fabric

**COST-EFFECTIVE, HIGH RESISTANCE,  
EASY CLEANING AND DURABLE**

Black, Burgundy and Marine are standard.



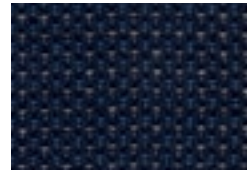
BLACK (CC-210)



CHARCOAL (CC-195)



SLATE (CC-171)



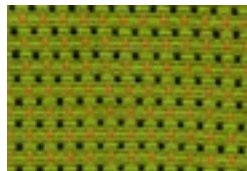
MIDNIGHT (CC-220)



MARINE (CC-201)



ORBIT (CC-192)



QUINCE (CC-230)



ORANGE (CC-198)



RED (CC-199)



BURGUNDY (CC-214)

## Pletha

**IMPORTED SYNTHETIC LEATHER (60% COTTON, 40% POLYESTER)  
GOOD VALUE, LONG-LASTING, EASY TO CLEAN**

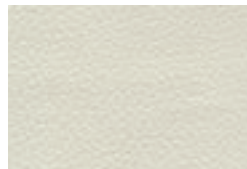
Black is standard. All other colours are priced on request. Many other colours available.



WHITE (PL-26)



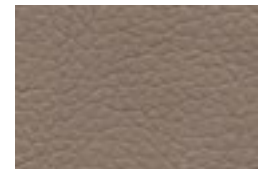
CREAM (OPL-201)



BONE (OPL-253)



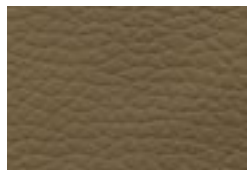
CEMENT (OPL-210)



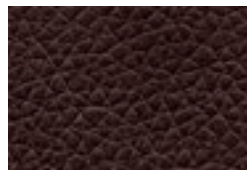
PUTTY (PL-110)



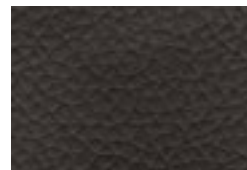
TAN (OPL-170)



CLAY (OPL-215)



COFFEE (OPL-239)



CHARCOAL (OPL-238)



DARK GREY (PL-140)



EGGPLANT (OPL-251)



BURGUNDY (OPL-231)



NAVY (PL-100)



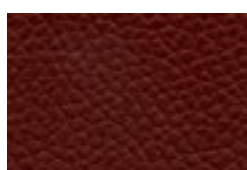
AQUA (OPL-229)



SAP GREEN (OPL-235)



PEA GREEN (OPL-233)



MAROON (OPL-255)



TERRACOTTA (OPL-180)



DEEP RED (PL-10)



DEEP ORANGE (OPL-224)

# Vulcan

100% ACRYLIC | +30 000 RUBS

Black is our standard. Colours cost slightly more (all colours are one price). Many other colours available.



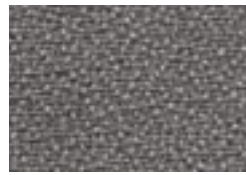
GREY (8)



MISTRAL (24)



DUSK (36)



STONE (36)



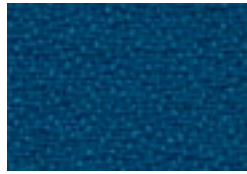
ICE (52)



SAPPHIRE (58)



DRIVE (3012)



PEACOCK (59)



VIOLET (19)



CAPTIVATE (3004)



TUTU (3003)



FIRE (42)



SOVIET (45)



GARNET (3)



DK CLARET (3010)



MALACHITE (23)



WASABI (49)



TENDRIL (3006)



SUNSET (48)



SALT (55)

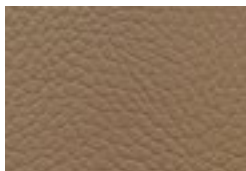
## Bonded leather

IMPORTED RECONSTITUTED/BLENDED LEATHER  
ISO-CERTIFIED & SABS-APPROVED QUALITY

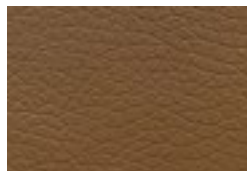
Black is our standard. All colours are priced on request. Many other colours are also available.



BONE (SL-24)



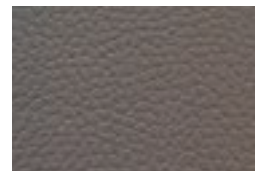
TAUPE (SL-103)



CAMEL (SL-12)



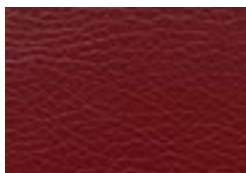
LIME (SL-2)



GREY (SL-104)



INDIGO (SL-61)



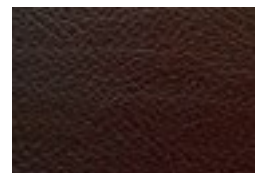
DEEP RED (SL-10)



BURGUNDY (SL-57)

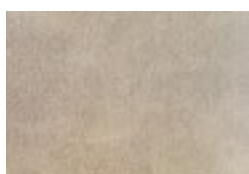


DARK BROWN (SL-11)



ESPRESSO (SL-109)

## Two-tone bonded leather



SL-502



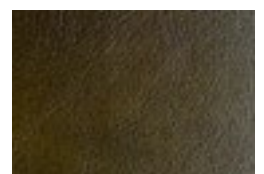
SL-64



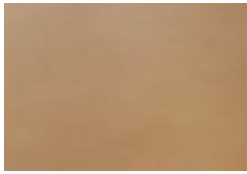
SL-504



SL-67



SL-500



SL-81



SL-400



SL-501



SL-111



SL-107

## Genuine leather

**FINEST QUALITY ITALIAN LEATHER  
MANUFACTURED UNDER ISO 9001:2008**

Black is our standard. All colours are priced on request. Many other colours are also available.

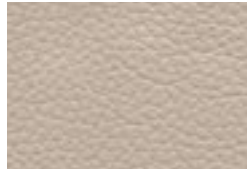
### New monotone colours



WHITE (GL-106)



IVORY (GL-124)



GREIGE (GL-122)



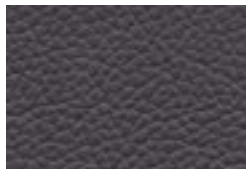
MINK (GL-117)



COFFEE (GL-104)



MID GREY (GL-120)



DARK GREY (GL-107)



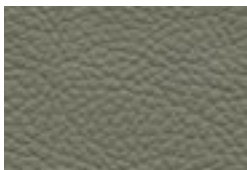
PIGEON BLUE (GL-116)



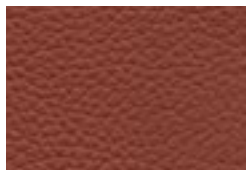
NAVY (GL-105)



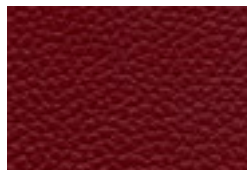
ESPRESSO BROWN (GL-103)



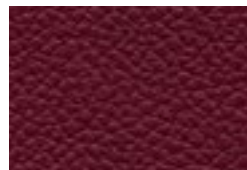
SAGE (GL-126)



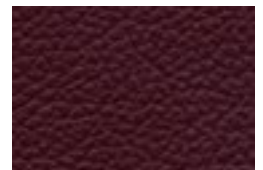
BRICK RED (GL-125)



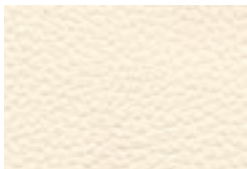
DEEP RED (GL-113)



DARK CHERRY (GL-114)



OXBLOOD (G-111)



CREAM (GL-123)



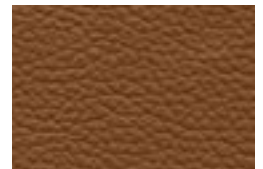
MUSTARD (GL-115)



FAWN (GL-121)



CURRY (GL-110)



CINNAMON (GL-108)

### New two-tone colours



GL-202



GL-203



GL-211



GL-401



GL-210



GL-213



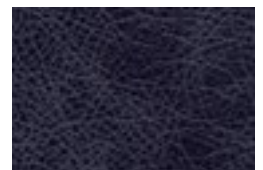
GL-503



GL-403



GL-502



GL-214



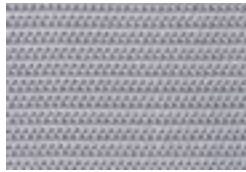
# Exclusive to us

THE FOLLOWING 2 RANGES ARE ONLY AVAILABLE THROUGH US

## Netting



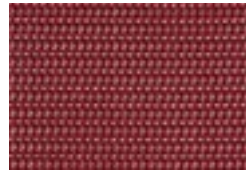
CATHA WHITE (27296)



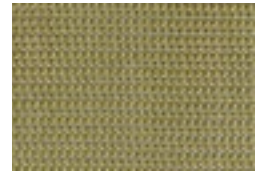
TAMARIX GREY (38506)



PAPPEA BLUE (48085)



VEPRIS RED (34332)



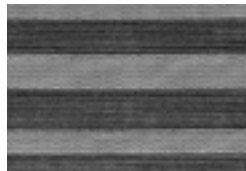
ACACIA OLIVE (48086)



BURKEA BLACK (1226)



ACROBAT BLACK (1227)



GRADATION BLACK

## Float fabric

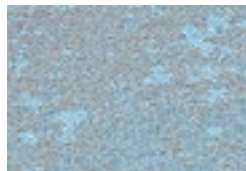
FULLY REVERSIBLE. 100% POLYESTER



MARBLE (9932)



CONCRETE (9933)



OCEAN (9934)

## Stitching options

NOT AVAILABLE FOR ALL PRODUCTS



DOUBLE NEEDLE SEAM



FRENCH SEAM STD.



WELT SEAM



DOUBLE NEEDLE + HEAVY STITCH + INSERT



PIPED SEAM



FRENCH SEAM + HEAVY STITCH

## Materials

### Solid oak timber

FOR SOFT SEATING & TABLES ONLY

Clear varnish

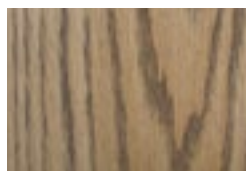
or oak + oil-based monocoat wood stains



OAK



COTTON WHITE



HAVANNA



GUNSMOKE



CHARCOAL

## Wood veneers

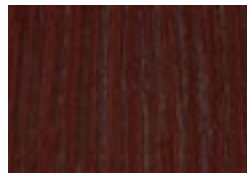
ONLY FOR OFFICE CHAIR COMPONENTS  
PLEASE SUPPLY A STAIN PRODUCT FOR ANOTHER COLOUR



OAK



CHERRY



ROSEWOOD



MAHOGANY

## Melamine tabletops

STAIN, SCRATCH, LIGHT AND MOISTURE RESISTANT

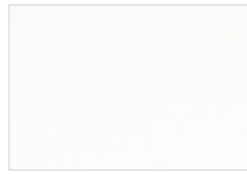
Iceberg white is our standard colour. There are 2 optional finishes: peen or linear. All colours are priced on request. Other textures and colours are available beside the selection below.



PEEN FINISH  
Smooth low sheen



LINEAR FINISH  
Wood grain texture



ICEBERG WHITE



BLACK CHERRY



SUMMER OAK



AMERICAN WALNUT



COIMBRA



MONUMENT OAK



SUPER BLACK

## Fibreglass tabletops

LIFELIKE DEPTH & TEXTURE.  
DURABLE, WATERPROOF, UV RESISTANT, WEATHER PROOF

### High Gloss



WHITE SMOOTH

### Wood grain



WHITE WASH



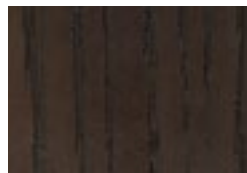
WEATHERED BALAU



GREY BALAU



WALNUT



DARK OAK



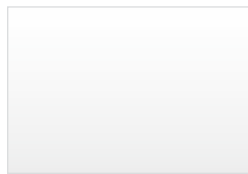
BLACK

## Glass

FOR TABLETOPS  
10 MM THICK, TEMPERED GLASS



CLEAR



FROSTED



SMOKED



GREY MIST



CHAMPAGNE



PINK OPAL



JADE



SKY BLUE



CANARY



APRICOT



CHERRY

## Epoxy finishes

### FRAMES AND BASES



GREEN GLOSS



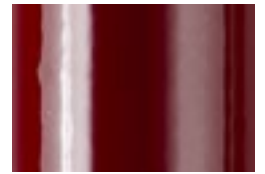
SEASIDE GLOSS



LIGHT YELLOW GLOSS



ORANGE GLOSS



RED WINE GLOSS



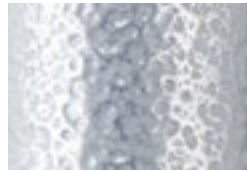
WHITE GLOSS



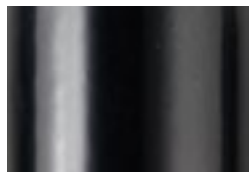
WHITE TEXTURED



ALUMINIUM GLOSS



ALUMINIUM TEXTURED



BLACK GLOSS



BLACK MATTE



BLACK TEXTURED

## Metallic plating

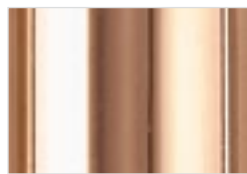
### FRAMES & BASES ONLY



CHROME PLATED



BRASS PLATED



ROSE GOLD PLATED

### Textile notes

- We are not liable for dye lot differences or delays due to non-availability of fabric/leather.
- The guarantee on local products for fabric or leather is held entirely by the respective mill.
- Please request our fabric care instructions if they are not supplied by us.

### Material notes

- Please expect slight shade variances per staining batches.
- Many people expect veneer to be uniform in appearance, like laminate, but bear in mind that wood is a natural product—no two trees are identical. It is those features that contribute to a veneer's unique beauty and character.
- Please check stock availability before placing orders to better estimate lead time.
- Non-standard staining colours will be quoted on request.